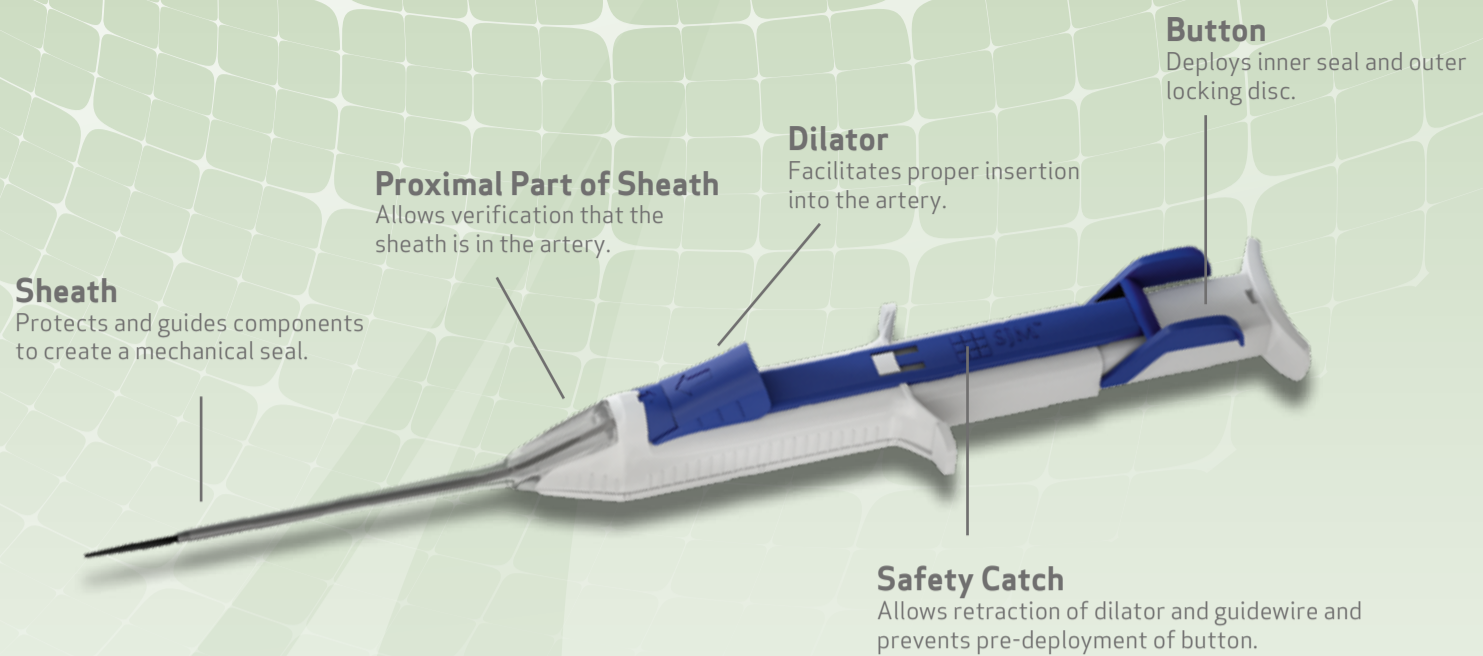


FemoSeal™

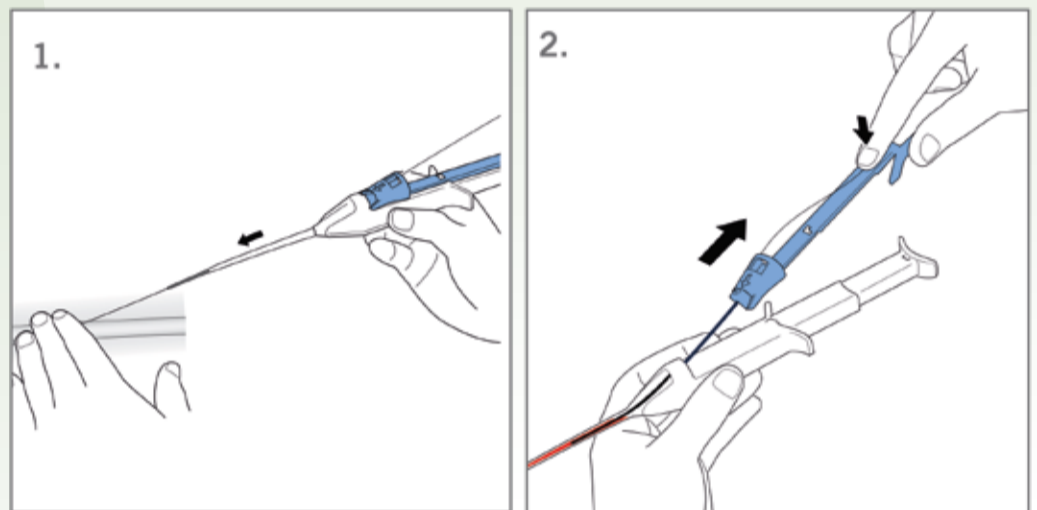
Vascular Closure System



HOW TO USE¹

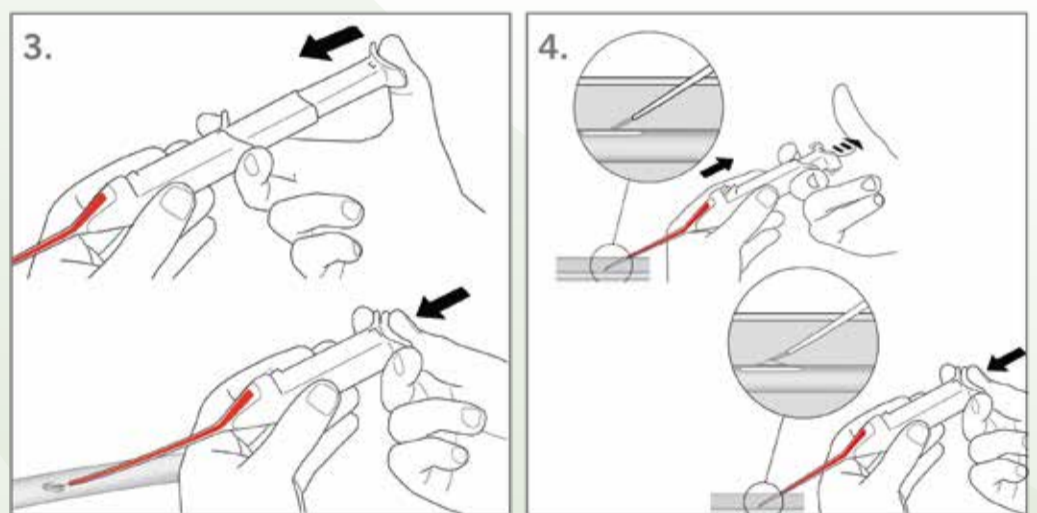
LOCATE THE ARTERY

1. After assessing the puncture site by fluoroscopy or ultrasound, insert the dilator into FemoSeal™ Unit until they snap together and marked signs meet. Insert the guidewire through the procedural sheath. Remove the procedural sheath and hold the guidewire in position. Thread the FemoSeal™ over the guidewire and insert the sheath into the artery.
2. Grip and squeeze the wings of FemoSeal™ Safety Catch, lift and retract the Safety Catch slowly along with the guidewire by 2-4cm until completely removed. Blood should appear in the proximal part of the sheath, verifying that the sheath is in the artery.



SET THE DISCS

3. Deploy the **inner seal** by pressing down the button completely in one continuous movement. The **inner seal** establishes hemostasis.
4. Pull back the FemoSeal™ and lift it with an angle (not less than 45°) until the depressed button springs back. The **inner seal** establishes hemostasis. Maintain suture tension while deploying **the outer locking disc**. Deploy the disc by completely pressing down the button again.



SEAL THE PUNCTURE

5. Remove the FemoSeal™ unit and verify hemostasis.
6. Cut the suture below skin level using a sterile instrument. Clean puncture site and apply a sterile dressing so that it can easily be observed during recovery.

