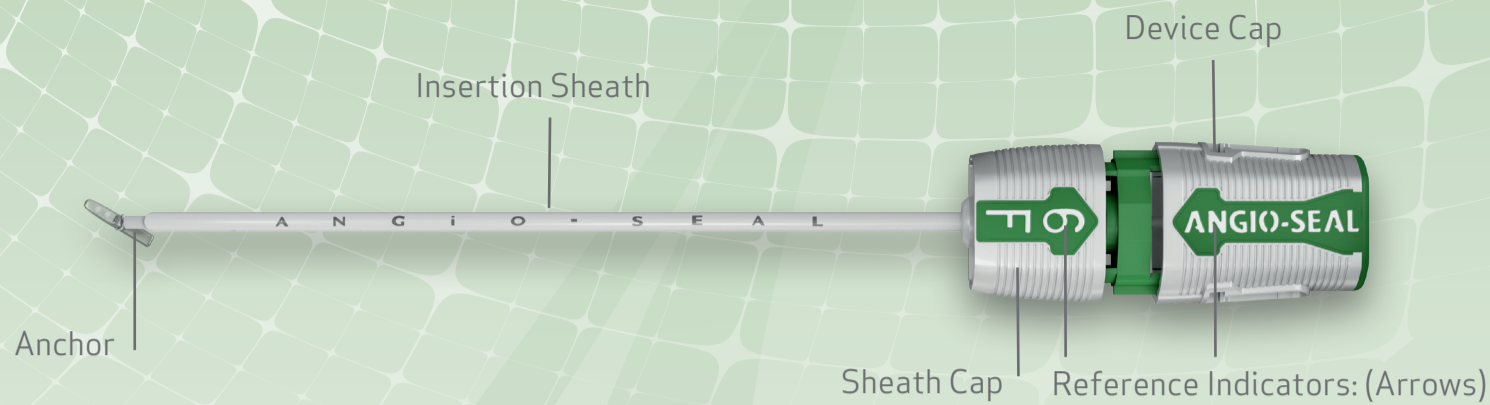


Angio-Seal™ VIP

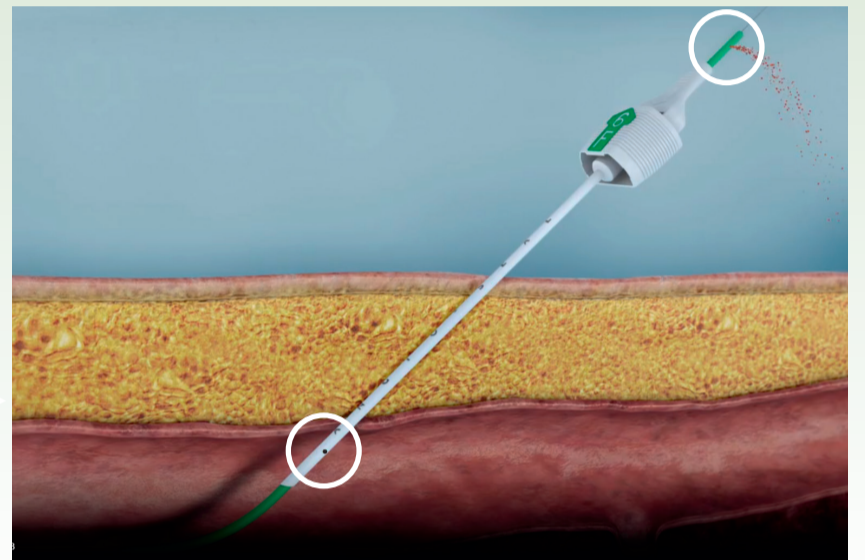
Vascular Closure Device



HOW TO USE¹

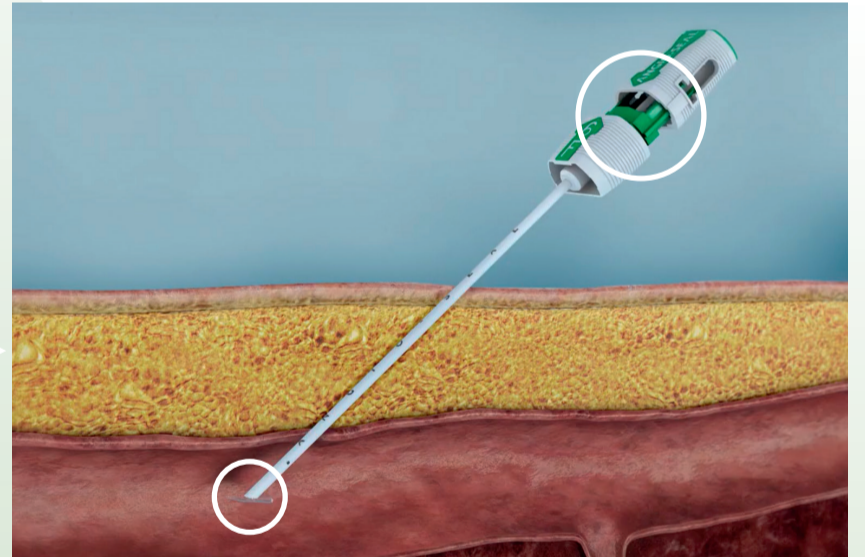
LOCATE THE ARTERY²

1. **Insert the arteriotomy locator into the Angio-Seal insertion sheath** (arrow to arrow), so the two pieces snap together securely. **Insert the Angio-Seal guidewire into the procedural sheath, then remove the procedural sheath.**
2. **Thread the Angio-Seal assembly over the guidewire:** when the tip of the insertion sheath is about 1.5 cm into the artery, blood will begin to flow from the drip hole in the locator.
3. **Confirm proper location** by withdrawing the Angio-Seal assembly until blood stops flowing from the drip hole, then advance the Angio-Seal assembly again until blood begins to flow from the drip hole.
4. **Remove the arteriotomy locator and guidewire** while holding the insertion sheath steady.



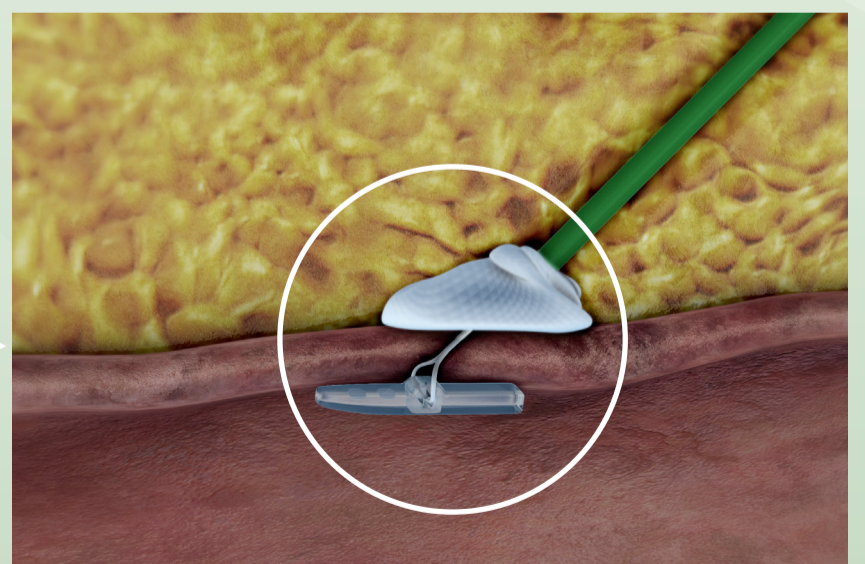
SET THE ANCHOR

1. **To release the anchor:** carefully grasp the Angio-Seal device at the bypass tube and advance it in small increments in the sheath cap until they snap together (arrow to arrow).
2. **To set the anchor:** holding the insertion sheath cap steady, grasp the device cap and slowly pull back until resistance from the anchor catching on the distal tip of the insertion sheath is felt. The device sleeve-colored bands should now be completely visible.



SEAL THE PUNCTURE

1. **Withdraw slowly the assembly** along the angle of the puncture tract to position the anchor against the vessel wall. A resistance should be felt.
2. **Withdraw the assembly until all the suture has been deployed:** a tamper tube will appear when the insertion sheath clears the skin, and a clear stop appears on the suture.
3. **Advance the knot and collagen with the tamper tube,** while maintaining tension on the suture. Hold the tamper tube on the knot for hemostasis. A complete seal is indicated when resistance is felt, and hemostasis is achieved. As a guide, in most cases a compaction marker will be revealed.
4. **Cut the suture below the clear stop, then remove the tamper tube.**
5. **Gently pull up on the suture and cut the suture below skin level.** Clean puncture site and apply a sterile dressing so that it can easily be observed during recovery.



1. For complete instructions, cautions and warnings, refer to the Angio-Seal VIP Instructions for Use.
2. Assess the puncture site location by performing an angiogram.