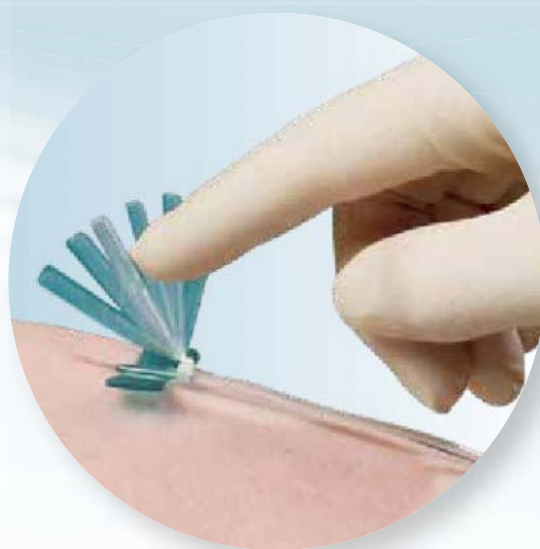




Surflo® Safety Winged Infusion Set

Safety devices of the Surshield® family



Protection and Care

- *Safety*
- *Ease of use*
- *Patient comfort*
- *User satisfaction*



Surflo® Safety Winged Infusion Set

Safety

The Surshield safety mechanism encapsulates the cannula irreversibly preventing needle stick injuries. Upon activation an audible click confirms the proper activation, additional visual confirmation is present. During activation, finger tips stay at all times away from the cannula tip.

Ease of use

Cannula sharpness combined with a special silicone coating allows an easy and smooth placement. User inspired wing design ensures a firm grip during placement. The easy one hand activation of the safety mechanism does not require a change in established needle insertion techniques.

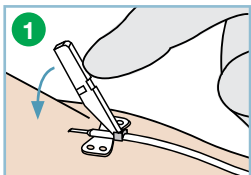
Patient comfort

The excellent quality of the Terumo® cannula is at the core of minimising trauma. Patients reported having experienced an almost painless placement.

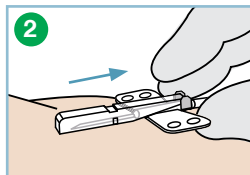
User satisfaction

The design and performance of the Surflo® safety winged infusion sets are supporting a successful placement and increasing end-user satisfaction due to less discomfort caused to patients.

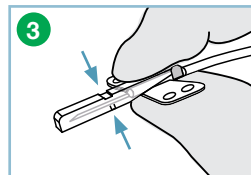
Recommendation for use



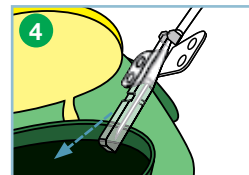
1 After successful infusion, place the needle protector over the needle.



2 Hold wing needle behind the wings and withdraw it from the vein.



3 With the thumb and index finger, press together the wings at the wing base and press the protective cover together with thumb and index finger until you hear and see the needle lock in place.



4 Then dispose of the needle in the Terusafe box.

Products and specifications

CE
0123

Code	Colour	Cannula - external Ø		Cannula length	Tubing length	Dead space mL
		G	mm			
SV*S18NL09	Pink	18	1.2	19 mm	90 mm	0.21
SV*S19NL09	Yellow	19	1.1	19 mm	90 mm	0.21
SV*S21NL09	Green	21	0.8	19 mm	90 mm	0.20
SV*S22NL09	Black	22	0.7	19 mm	90 mm	0.20
SV*S23NL09	Lt. Blue	23	0.6	19 mm	90 mm	0.20
SV*S25NL09	Orange	25	0.5	19 mm	90 mm	0.19

Code	Colour	Cannula - external Ø		Cannula length	Tubing length	Dead space mL
		G	mm			
SV*S18NL30	Pink	18	1.2	19 mm	300 mm	0.45
SV*S19NL30	Yellow	19	1.1	19 mm	300 mm	0.45
SV*S21NL30	Green	21	0.8	19 mm	300 mm	0.41
SV*S22NL30	Black	22	0.7	19 mm	300 mm	0.41
SV*S23NL30	Lt. Blue	23	0.6	19 mm	300 mm	0.40
SV*S25NL30	Orange	25	0.5	19 mm	300 mm	0.40

Shelf life: 3 years
Packaging: 10 x 50 pieces



Terumo Corporation
44-1, 2-chome, Hatagaya
Shibuya-ku, Tokyo 151-0072,
Japan
Tel.: +81 3 3374 8111
Fax: +81 3 3374 8196

European Headquarters

Terumo Europe N.V.
Interleuvenlaan 40
3001 Leuven, Belgium
Tel.: +32 16 39 25 80
Fax: +32 16 40 02 49

European Offices

Terumo Europe N.V.
Benelux Sales Division
Interleuvenlaan 40
3001 Leuven, Belgium
Tel.: +32 16 39 25 80
Fax: +32 16 39 25 99
The Netherlands:
Tel.: 0800 0220396
Fax: 0800 0220414

Laboratoires Terumo France S.A.
Parc Ariane - Bât. Uranus
1, rue Hélène Boucher
78284 Guyancourt Cedex, France
Tel.: +33 130 96 13 00
Fax: +33 130 43 60 85

Terumo Deutschland GmbH
Ludwig-Erhard-Strasse 6
65760 Eschborn, Germany
Tel.: +49 6196 80 230
Fax: +49 6196 80 23 200

Terumo Deutschland GmbH
Zweigniederlassung Spreitenbach
Bodenackerstrasse 3
8957 Spreitenbach, Switzerland
Tel.: +41 56 419 10 10
Fax: +41 56 419 10 11

Terumo Europe España SL
Avda. Juan Carlos I, Nº 13 - 7ª Planta
Edificio Torre La Garena
28806 Alcalá de Henares (Madrid),
Spain
Tel.: +34 9021 01 298
Fax: +34 9021 01 358

Terumo Italia S.r.l.
Via Simone Martini, 143/145
00142 Roma RM,
Italy
Tel.: +39 0651 96 14 20
Fax: +39 0650 30 407

Terumo Sweden AB
Nya Varvet, Byggnad 90
Sven Källfelts Gata 18
426 71 Västra Frölunda,
Sweden
Tel.: +46 3174 85 880
Fax: +46 3174 85 890

Terumo Denmark
Filial of Terumo Sweden AB
Tel.: +45 7020 93 80
Fax: +45 7020 94 80

Terumo UK Ltd
Tamesis
The Causeway
Egham, Surrey
TW20 9AW, United Kingdom
Tel.: +44 1784 476 200
Fax: +44 1784 476 201

Terumo Europe N.V.
Moscow Representative Office
BC Northern Tower
13Fr., 10 Testovskaya Street
Moscow 123317, Russia
Tel.: + 7 495 988 4740
Fax: + 7 495 988 4739

Terumo Corporation Dubai Branch
(Middle East and Africa)
Al Masraf Tower, 22nd Floor
P. O. Box 20291 Dubai
U.A.E.
Tel.: + 971 4 221 2220
Fax: + 971 4 221 3330

**Addresses subject to change,
please consult our Website.**



© Registered Trademark
Published by Terumo Europe N.V.
HO 60GB-0102FK-VII(02.13)E