



Terumo® Advanced Perfusion System 1

A highly flexible, configurable and intuitive perfusion system

SPECIFICATIONS

System 1 Base	801764
Voltage/amperage	220/240 V, 7 A
Height	22.6" (57.4 cm)
Width	35.2" (89.4 cm)
Depth	26.5" (67.3 cm)
Weight	262 lbs (118.8 kg)

Electronic oxygen/air blender/analyzer	801188
Operating range	
Flow	0 – 10 L/min
FiO ₂	0.21 – 1.00
Measured O ₂	21% – 100%

Central control monitor II	816300
Height	13.7" (34.8 cm)
Width	15.7" (39.9 cm)
Depth	3.4" (8.6 cm)
Weight	15 lbs (6.8 kg)

Roller pumps	816570 (small)	816571 (large)
Pumphead diameter	4" (10.2 cm)	6" (15.2 cm)
Voltage	24 VDC	24 VDC
Height	12.5" (31.8 cm)	12.5" (31.8 cm)
Width	7.1" (18.0 cm)	8.5" (21.6 cm)
Depth	11.8" (30.0 cm)	13.1" (33.3 cm)
Weight	21 lbs (9.5 kg)	24 lbs (10.9 kg)
Operating range	0 – 4 L/min 0 – 250 RPM	0 – 10 L/min 0 – 250 RPM

Centrifugal control unit	816572
Voltage	24 VDC
Height	3.1" (8.0 cm)
Width	7.3" (18.4 cm)
Depth	8.5" (21.6 cm)
Weight	2.4 lbs (1.1 kg)
Operating range	0 – 9.9 L/min

Flexible halogen lamps	801238	801558
Size	33" (83.8 cm)	15" (38.1 cm)
Voltage	24 VDC	24 VDC



Roller pumps, available in two sizes



The centrifugal pump's compact size allows pole mounting of the entire system

Specifications >>>



Terumo® Advanced Perfusion System 1

SPECIFICATIONS

Functional modules

Dimensions	Flow module 802018	Other modules
Height	6.30" (160.0 mm)	3.54" (90.0 mm)
Width	3.63" (92.2 mm)	1.06" (27.0 mm)
Depth	1.33" (33.8 mm)	3.03" (77.0 mm)
Weight	0.95 lbs (0.43 kg)	0.27 lbs (0.12 kg)

Pressure	802112
	Two pressure transducers per module
	Operating range: -250 mmHg to 900 mmHg
	Maximum of 8 transducers

Temperature	802114
	YSI®* 400, two temperature sensors per module
	Operating range: 0 – 50°C
	Maximum of 8 sensors
	*YSI® is a registered trademark of Yellow Springs Instruments

Flow	802018
	Non-invasive flow measurement, one per module
	Operating range: -9.99 L/min to 9.99 L/min
	Maximum of 4 modules

Ultrasonic level detection	802111 ¹
	One alarm sensor, one alert sensor per module
	Reservoir: Functions with hardshell reservoirs that have a wall thickness of 0.07" – 0.15" (1.78 mm – 3.81 mm)
	Maximum of 1 module

Ultrasonic air bubble detector	802110 ¹
	One air bubble detector per module
	Operating range:
	1/4" tubing: 0.3 mL or larger at flow rates up to 3 L/min
	3/8" tubing: 0.5 mL or larger at flow rates up to 6 L/min
	Maximum of 4 modules

Electronic venous occluder	803480
	One venous occluder per module
	Operating range:
	0 – 100% flow on 1/4" ID x 1/16" wall thickness to 1/2" ID x 3/32" wall thickness at fluid T=15-50°C
	Maximum of 1 module

Interface module for CDI System 101	802558
	One CDI System 101 monitor per module
	Maximum of 1 module (either CDI System 101 or CDI System 500)

Interface module for CDI System 500	803479
	One CDI System 500 monitor per module
	Maximum of 1 module (either CDI System 101 or CDI System 500)

Interface module for RS-232	802113
	One data management system per module
	Maximum of 1 module (either RS-232 or RS-485)

Interface module for RS-485	803518
	One data management system per module
	Maximum of 1 module (either RS-232 or RS-485)



Modules plug into any of the available slots

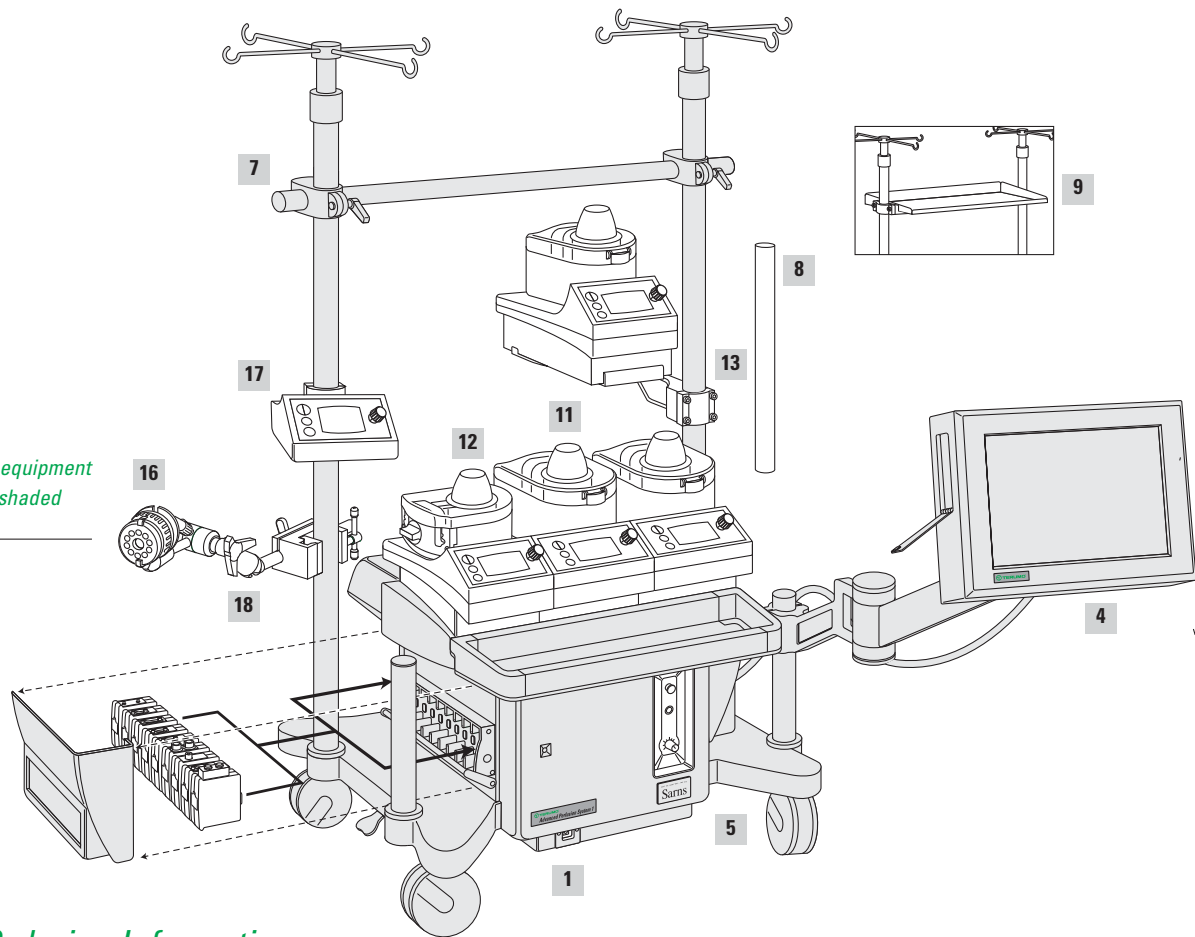


Compact module design



Electronic O₂/air blender/analyzer housed in the base

¹Must be ordered separately, one piece included in base price



Standard equipment is shown shaded

▶ Ordering Information

DESCRIPTION

CATALOG NO.

CALLOUT

<<< Callouts refer to illustrations

System 1 Base

220/240 V System 1	801764	1*
with		
Programmed PC card system configuration	803739	
Hand crank (includes 2 hand cranks)	801016	2
Hand crank bracket	802089	3
Central control monitor	816300	4
CCM cover	816261	

*Shaded items are included with System 1

Base options

Electronic gas blender/analyzer*	801188	5
Pole-mounted blender* O ₂ /air	164235	6

*Each blender requires a hose kit

Triple gas flowmeter (O ₂ /O ₂ /CO ₂)	9497	
---	------	--

Hose kit

Non-U.S. hose kit (3 hoses: black, white, b/w striped)	814474	
--	--------	--

Center poles and Accessories

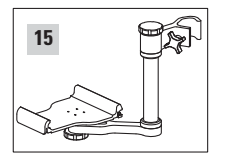
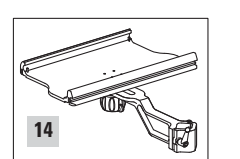
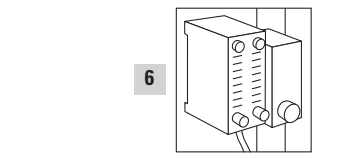
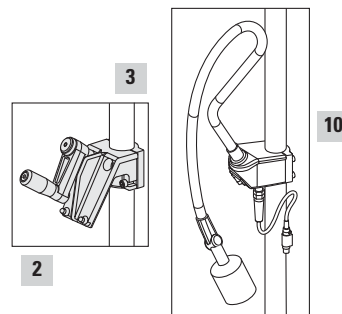
Crossbar fitting (required for each additional pole)	145980	7
2' (0.6 m) pole	16553301	8
3' (0.9 m) pole	131115	8
4' (1.2 m) pole	16553401	8
Pole-to-pole shelf	816489	9
Sliding back cover panel kit	816370	
Universal jumper cord	134332	

Flexible halogen lamp

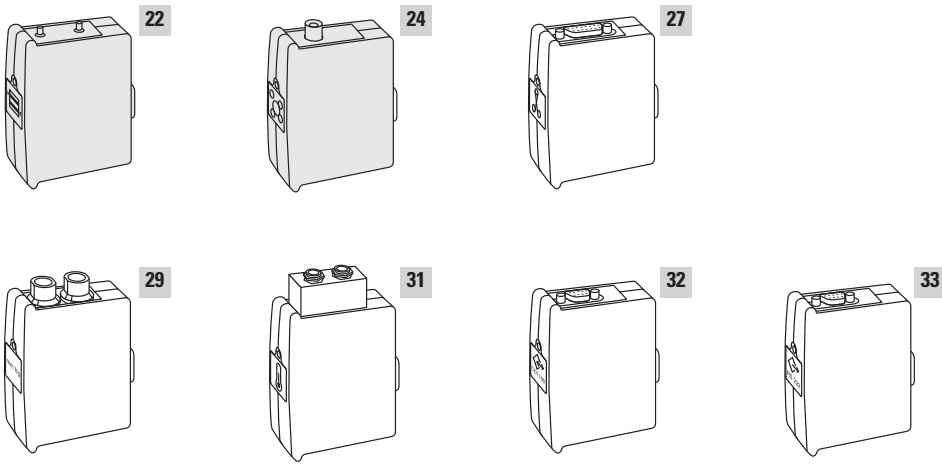
33" (83.8 cm) flexible halogen lamp	801238	10
15" (38.1 cm) flexible halogen lamp	801558	10

Roller pumps

Roller pump 6" (15.2 cm) diameter	816571	11
Roller pump 4" (10.2 cm) diameter	816570	12
Pole-mount pump rest with bracket	801093	13
Dual pumps pole mount bracket	816477	14
Descending pole mount pump bracket	816483	15



Ordering information >>>



Standard equipment is shown shaded

▶ Ordering Information

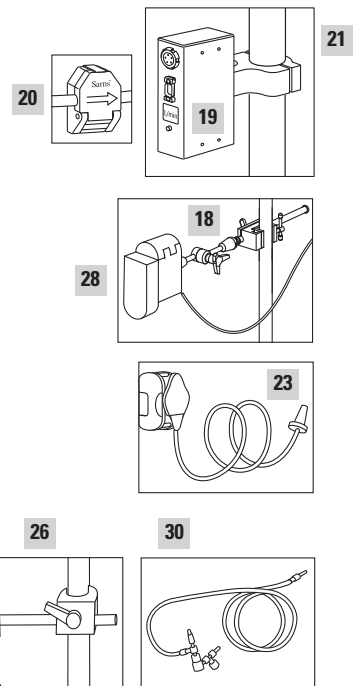
DESCRIPTION	CATALOG NO.	CALLOUT
Integrated centrifugal system		
Drive motor	164267	16
Control unit	816572	17
Manual drive	164268	
Flexible mounting arm	816620	18
Flow sensor system		
Flow module	802018	19
Non-invasive flow sensor 3/8" (9.5 mm) ID x 3/32" (2.4 mm) wall, reusable	6382	20
Mounting bracket (holds 2 modules)	801550	21
Level detection (One each included with System 1)		
Level detect module	802111	22
Yellow transducer	195215	23
Red transducer	195274	23
Level sensor pads, gel included (60 per box)	195240	
Air bubble detection (One each included with System 1)¹		
Air bubble detect module	802110 ¹	24
Pole clip sensor holder	149876	
Ultrasonic air sensor (choose 1 of 3)		
3/8" x 3/32" (9.5 mm x 2.4 mm)	5773	25
1/4" x 3/32" (6.4 mm x 2.4 mm)	5791	25
1/4" x 1/16" (6.4 mm x 1.6 mm)	5785	25
Air sensor bracket (optional)	5793	26
Venous occluder		
Occluder module	803480	27
Occluder head (no holder included)	806455	28
Flexible mounting arm	816620	18
Pressure monitoring		
Pressure module	802112	29
Reusable pressure transducer	16433301	
Pressure monitoring kit (10 per box)	16066100	30
Pressure transducer holder	22300030	
Temperature monitoring		
Temperature module, YSI®* series 400 compatible (2 temperature ports per module) ...	802114	31
Rectal/oesophageal temperature probe YSI®*	31006122	
Red lead wire for CAPIOX® Oxygenators	CX*BP022	
Blue lead wire for CAPIOX® Oxygenators	CX*BP021	
Luer design thermistor for CAPIOX® Oxygenators	CX*TL	
Data interface		
Interface module for CDI System 101	802558	32
Interface module for CDI System 500	803479	32
Serial interface module RS-232	802113	33
Serial interface module RS-485	803518	33
Upgrades "classic" System 1		
System 1 Tray and Cable Cover Kit	817165	
Occluder Plate Kit	816630	
CCM Cover	816261	

<<< Callouts refer to illustrations

✓ Features

Terumo Advanced Perfusion System 1

- Unprecedented flexibility
- Intuitive interface design
- Control devices from Central Control Monitor or from local controls
- Pole-mountable pumps
- Self-adjusting tube clamps
- Rotating pump raceways



*YSI® is a registered trademark of Yellow Springs Instruments

¹ One sensor required per air bubble detection system