

# Corporate Citizenship Report 2017

The key element of Terumo Europe's Corporate Citizenship Program is the Terumo DNA, which is composed of our corporate mission 'Contributing to Society through Healthcare', vision 'Innovating at the Speed of Life' and our Terumo Five Statements.

**1296**  
associates

**46%**  
males

**54%**  
females

**45**  
nationalities

**20**  
countries (EMEA)

**15** Corporate  
Citizenship Ambassadors



## People

## Patient

## Planet

**THE BIG SHARE** **Employee Experience Survey**

**81%**  
engaged Associates

**Learning organization**

**3062**  
enrollments

**55**  
different trainings

**458**  
unique associates that followed trainings

**Charitable donations**

**10+**  
donations (over EMEA) related to organizations that support local community and health-care purposes



EcoVadis Golden recognition level:

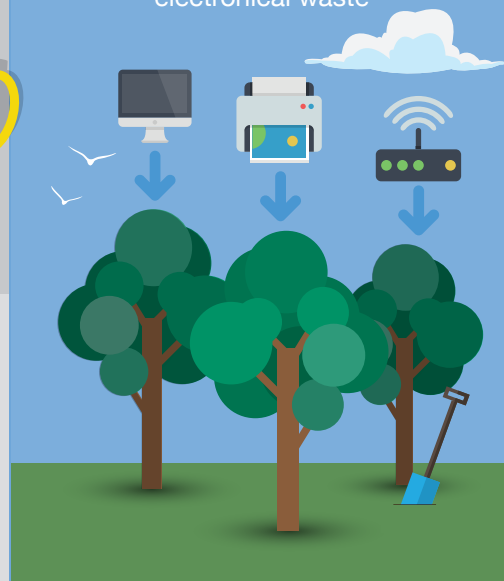


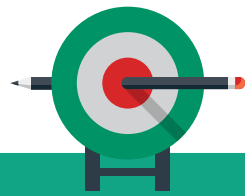
**500**  
associates trained in fraud awareness

**↓ 5%**  
less water consumption

**↓ 5%**  
reduction in energy consumption

**Trees**  
planted to compensate ICT, electrical and electronical waste





# FY18 targets

Statement for the future

## Charitable donations



Structural, long-term partnerships



Annual charity theme: (liver) cancer

## Social activities



### Associates' activities:

Associates can apply for sponsoring for a charitable organization they support through volunteering.



### Social activities:

Associates can participate in a social activity & apply for sponsoring.



### Social volunteering:

Support departments in the start-up of social teambuilding activities.

## Ongoing listening strategy



Optimize Employee Experience of our associates throughout their Terumo lifecycle.

## Improved candidate experience



In FY18, we aim to have implemented a new module in our HRIS System, to further improve the candidate experience of job applicants.

## Continuously improve safety of our associates



By monitoring & improving the technical installation



By developing awareness and responsibility of our associates



Implementation of the Supplier Code of Conduct for all existing suppliers and clients.



Continuously reduce energy and water consumption.



Continuously increase waste recycling.



Reporting on our efforts is a key CSR commitment for Terumo Europe. Read the full report on our corporate website. [www.terumo-europe.com](http://www.terumo-europe.com).